



BISTOON[®]
TILE
INDUSTRIES

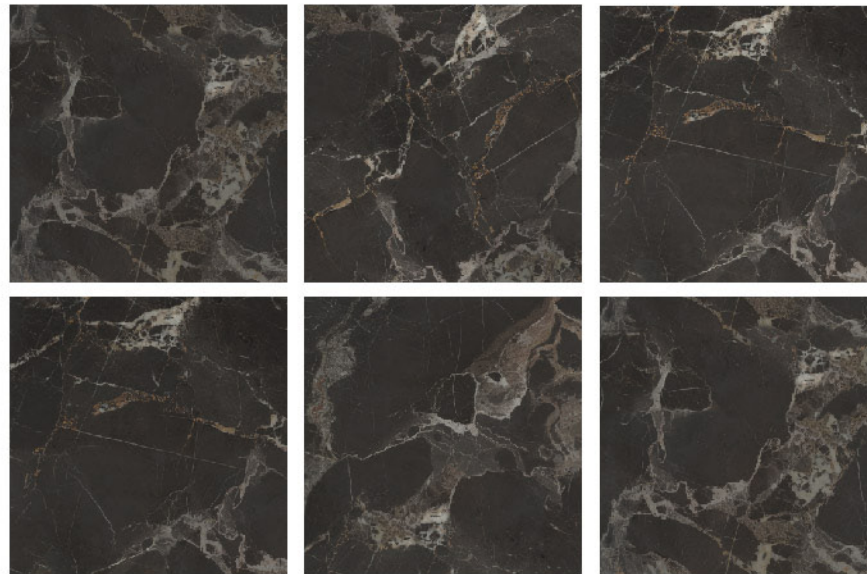
1010x1010mm
Matt Glaze Collection



BISTOON®
TILE
INDUSTRIES

Belfast Collection

Size: 1010x1010mm
Effect: Matt Glaze
Body: Porcelain
Thickness: 10mm
Faces: 6



Dark Smoky



BISTOON®
TILE
INDUSTRIES

Bordo Collection

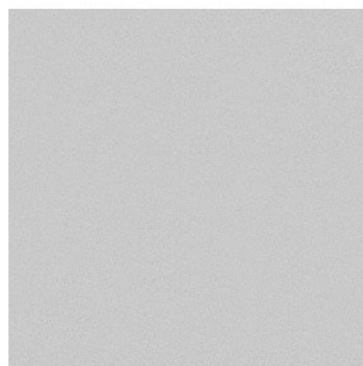
Size: 1010x1010mm

Effect: Matt Glaze

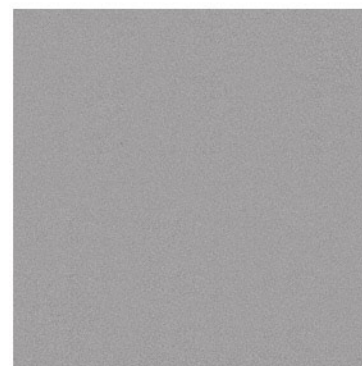
Body: Porcelain

Thickness: 10mm

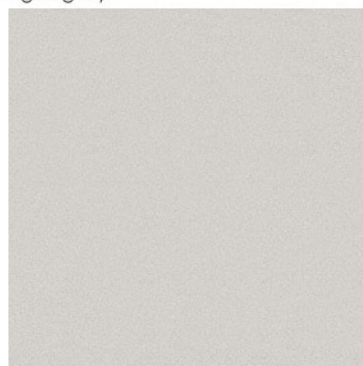
Faces: 1



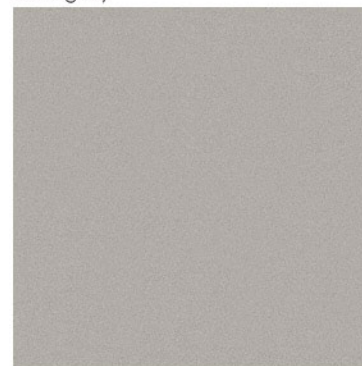
Light gray



Dark gray



Light Cream



Dark Cream



BISTOON®
TILE
INDUSTRIES

Cairo Collection

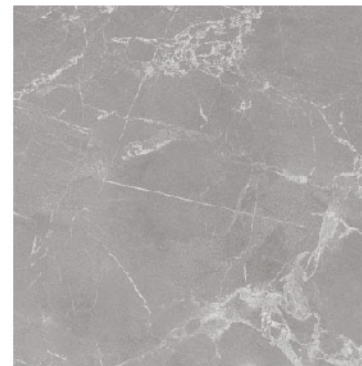
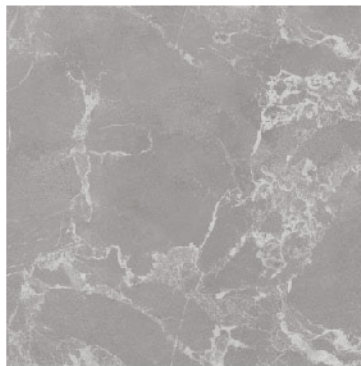
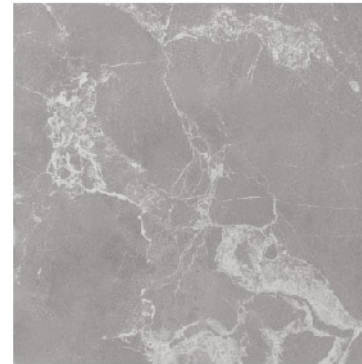
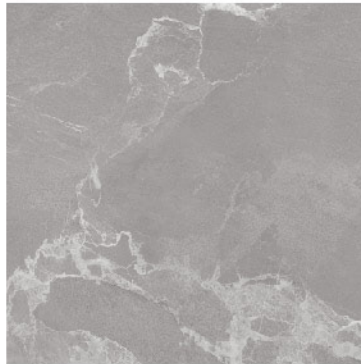
Size: 1010x1010mm

Effect: Matt Glaze

Body: Porcelain

Thickness: 10mm

Faces: 4



Dark Gray



BISTOON®
TILE
INDUSTRIES

Cairo Collection

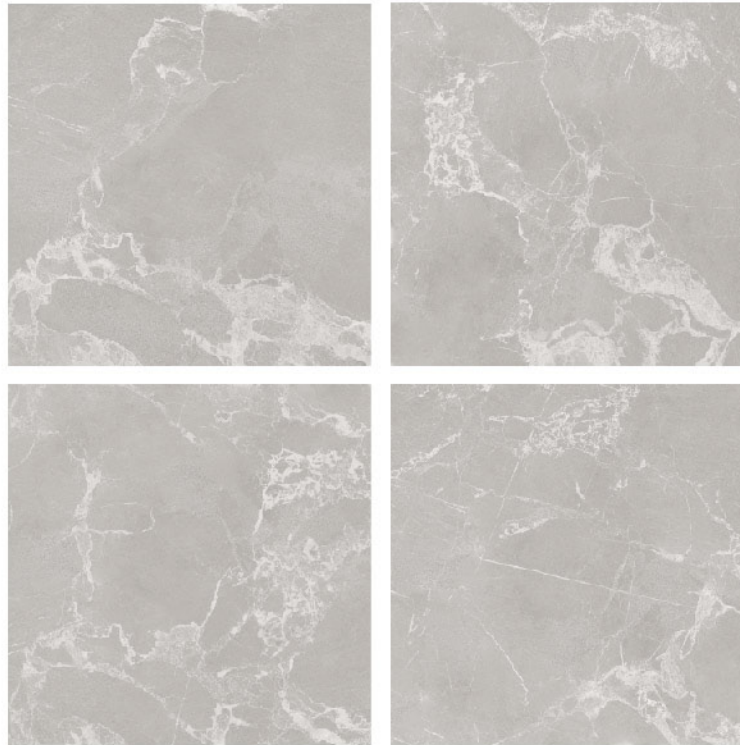
Size: 1010x1010mm

Effect: Matt Glaze

Body: Porcelain

Thickness: 10mm

Faces: 4



Light Gray



BISTOON®
TILE
INDUSTRIES

Campbell Collection

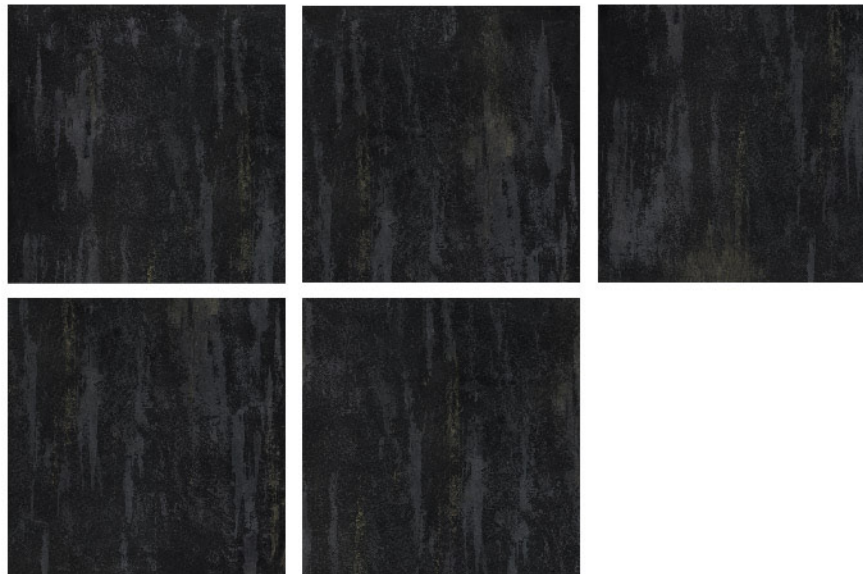
Size: 1010x1010mm

Effect: Glossy Matt

Body: Porcelain

Thickness: 10mm

Faces: 5



Dark Gray



BISTOON®
TILE
INDUSTRIES

Campbell Collection

Size: 1010x1010mm
Effect: Glossy Matt
Body: Porcelain
Thickness: 10mm
Faces: 5



White



BISTOON®
TILE
INDUSTRIES

Cavalino Collection

Size: 1010x1010mm

Effect: Matt Glaze

Body: Porcelain

Thickness: 10mm

Faces: 7



White



BISTOON®
TILE
INDUSTRIES

Lucarno Collection

Size: 1010x1010mm

Effect: Matt Glaze

Body: Porcelain

Thickness: 10mm

Faces: 9



White



BISTOON®
TILE
INDUSTRIES

Coventry Collection

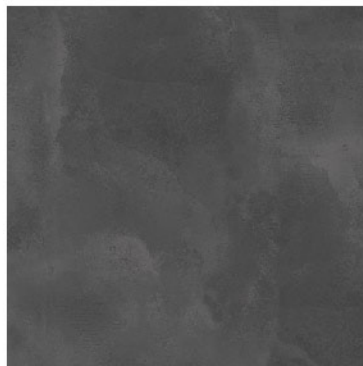
Size: 1010x1010mm

Effect: Matt Glaze

Body: Porcelain

Thickness: 10mm

Faces: 4



Dark Gray



BISTOON®
TILE
INDUSTRIES

Coventry Collection

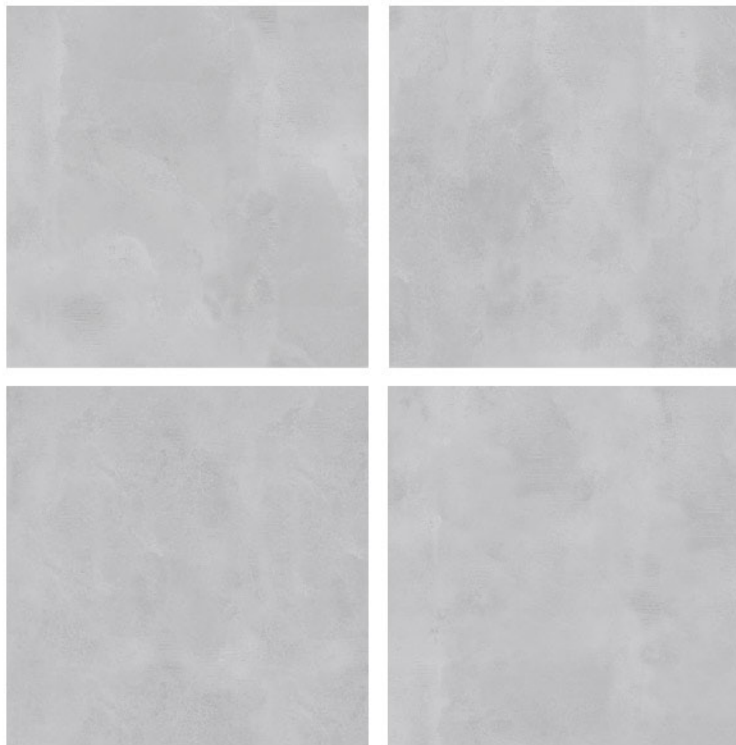
Size: 1010x1010mm

Effect: Matt Glaze

Body: Porcelain

Thickness: 10mm

Faces: 4



Light Gray



BISTOON®
TILE
INDUSTRIES

Devon Collection

Size: 1010x1010mm
Effect: Matt Glaze
Body: Porcelain
Thickness: 10mm
Faces: 4



Light Beige



BISTOON®
TILE
INDUSTRIES

Devon Collection

Size: 1010x1010mm

Effect: Matt Glaze

Body: Porcelain

Thickness: 10mm

Faces: 4



Light Gray



BISTOON®
TILE
INDUSTRIES

Delvar Collection

Size: 1010x1010mm

Effect: Matt Glaze

Body: Porcelain

Thickness: 10mm

Faces: 6



Dark Gray



BISTOON®
TILE
INDUSTRIES

Delvar Collection

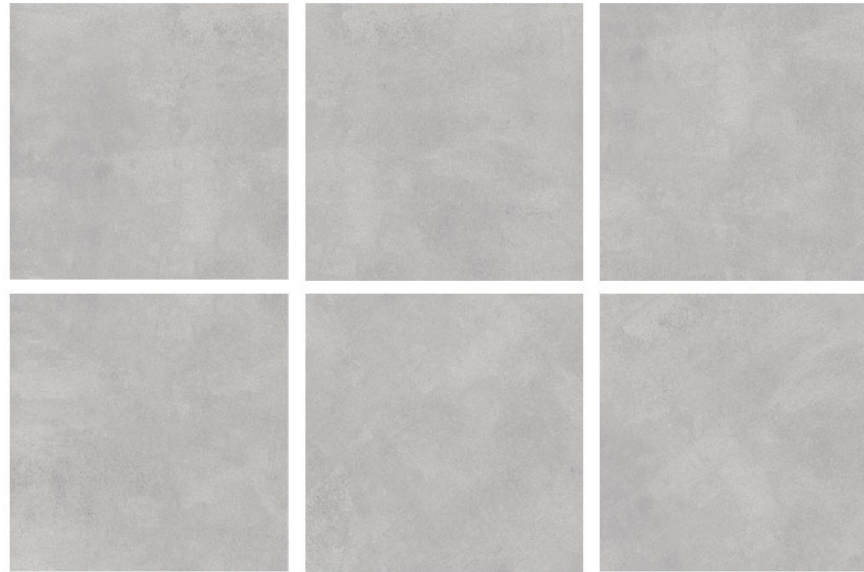
Size: 1010x1010mm

Effect: Matt Glaze

Body: Porcelain

Thickness: 10mm

Faces: 6



Light Gray



BISTOON®
TILE
INDUSTRIES

Odesa Collection

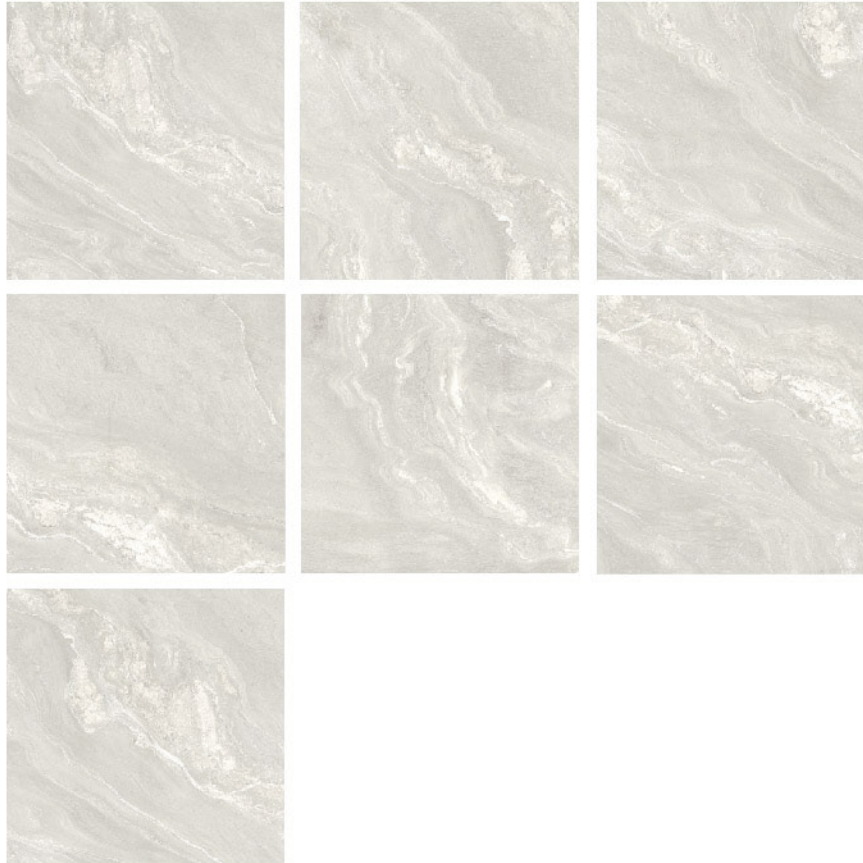
Size: 1010x1010mm

Effect: Matt Glaze

Body: Porcelain

Thickness: 10mm

Faces: 7



Light Cream



BISTOON®
TILE
INDUSTRIES

Rosario Collection

Size: 1010x1010mm
Effect: Glossy Matt
Body: Porcelain
Thickness: 10mm
Faces: 6



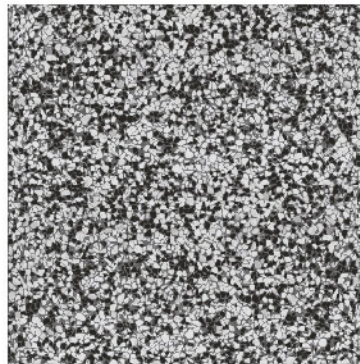
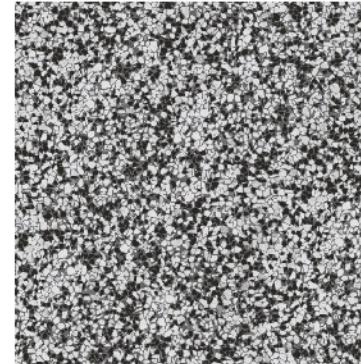
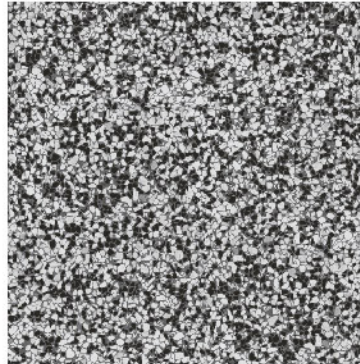
Light Gray



BISTOON®
TILE
INDUSTRIES

Torin Collection

Size: 1010x1010mm
Effect: Glossy Matt
Body: Porcelain
Thickness: 10mm
Faces: 3



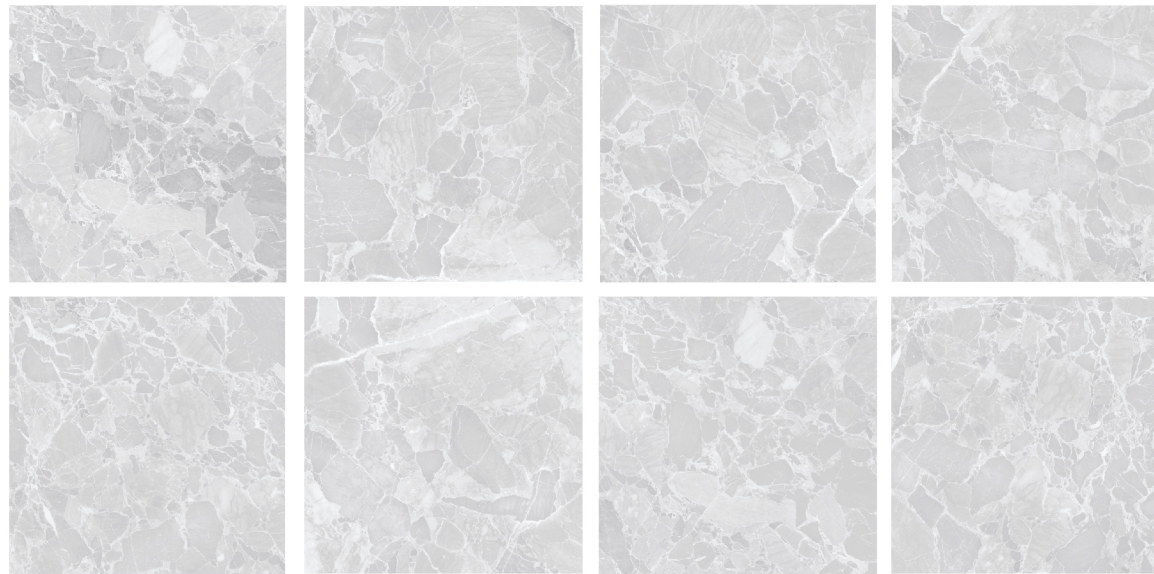
Black & White



BISTOON®
TILE
INDUSTRIES

Sortland Collection

Size: 1010x1010mm
Effect: Matt Glaze
Body: Porcelain
Thickness: 10mm
Faces: 8



Light Gray



BISTOON®
TILE
IN UST IES

Karlino Collection

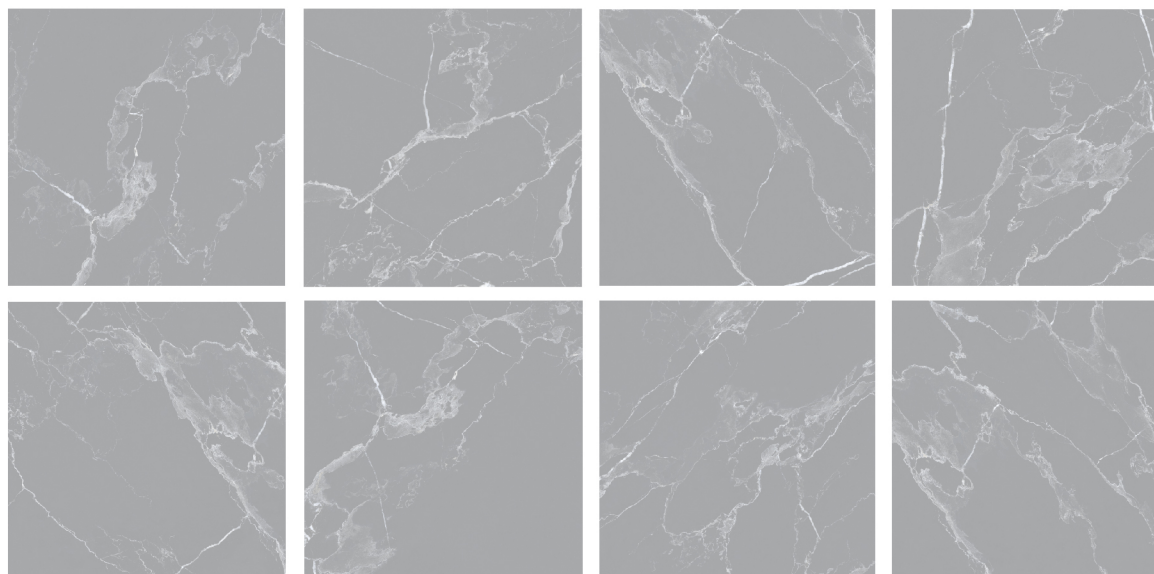
Size: 1010x1010mm

Effect: Matt Glaze

Body: Porcelain

Thickness: 10mm

Faces: 8



Dark Gray



BISTOON®
TILE
IN UST IES

Karlino Collection

Size: 1010x1010mm

Effect: Matt Glaze

Body: Porcelain

Thickness: 10mm

Faces: 8



Light Gray

Family is a Value

No.858, Meysam 2 St,

Payam Blvd, Karaj

P.O BOX: 31991-89200

Tel: (+98) 26-3559

Fax: (+98) 26-34802899

info@bistoontile.com